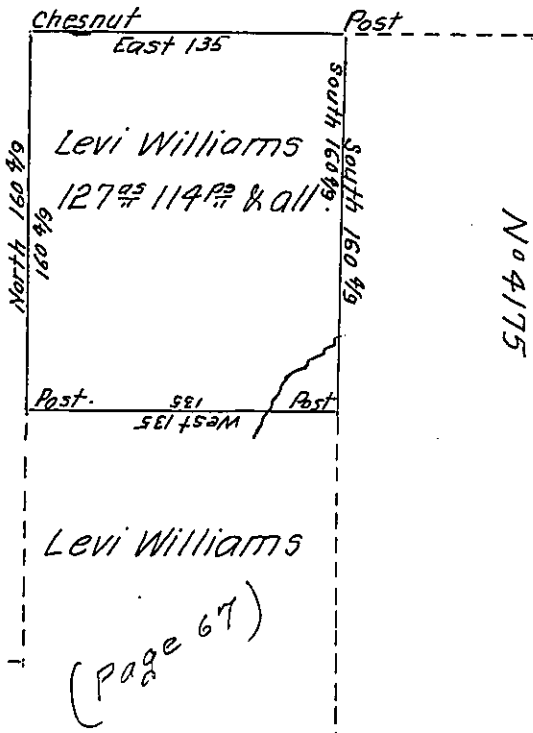


Levi Williams

Thomas Logue.



Draft of a Tract of Land Situate in Grove township Cameron County Surveyed
 May the 11th A.D. 1864 for Levi Williams in Pursuance of his Warrant dated Dec-
 ember the 15th 1863 and Containing One Hundred and Twenty Seven Acres and
 One Hundred and four teen perches and allowance of Six pr. cent.

To Hon. James P. Barr
 Surveyor General.

Edward Vosburg
 County Surveyor

IN TESTIMONY that the above is a copy of the original remaining on file in
 the Department of Internal Affairs of Pennsylvania, made
 conformably to an Act of Assembly approved the 16th day of
 February, 1833, I have hereunto set my Hand and caused
 the Seal of said Department to be affixed at Harrisburg,
 this Ninth day of July 1907

Henry Howard
 Secretary of Internal Affairs.